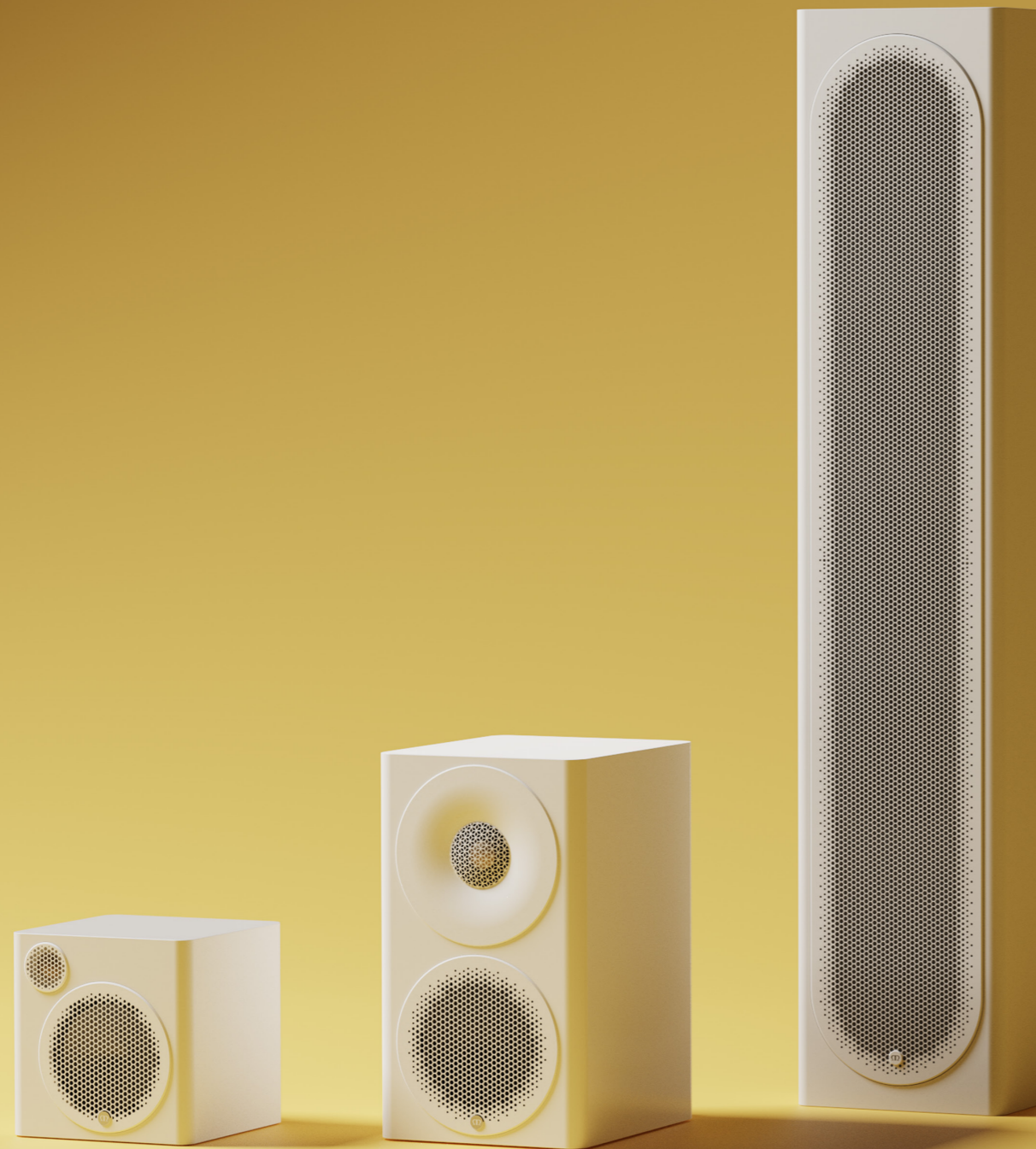


Radius Series 4G



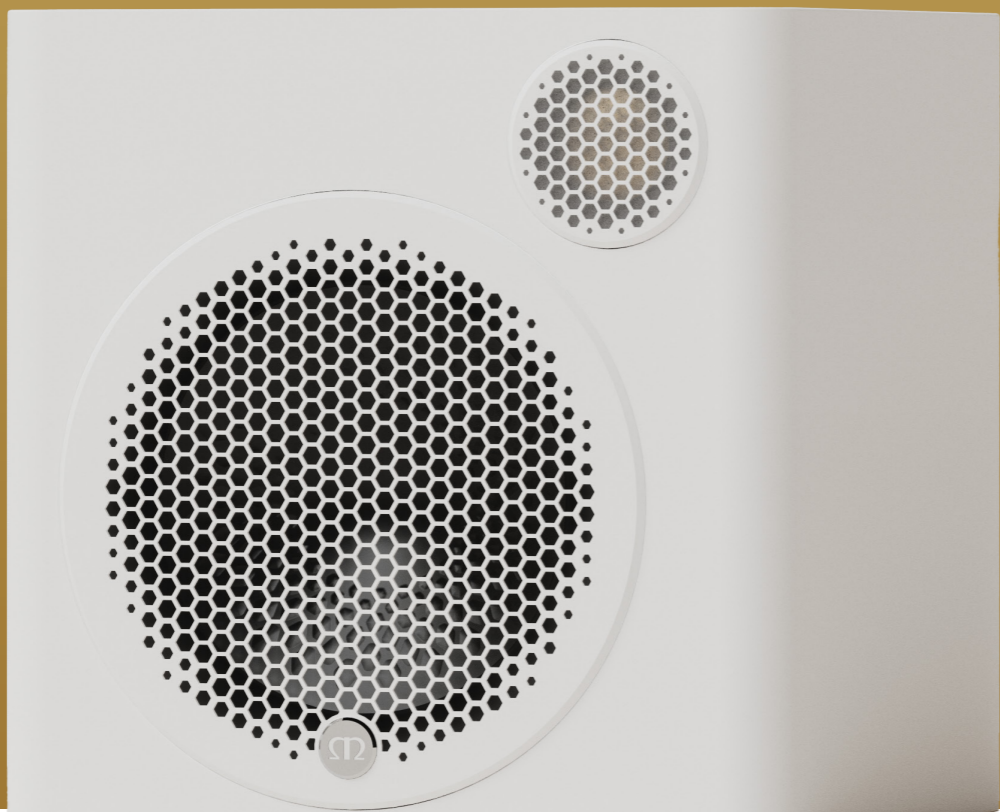
Radius Series 4G

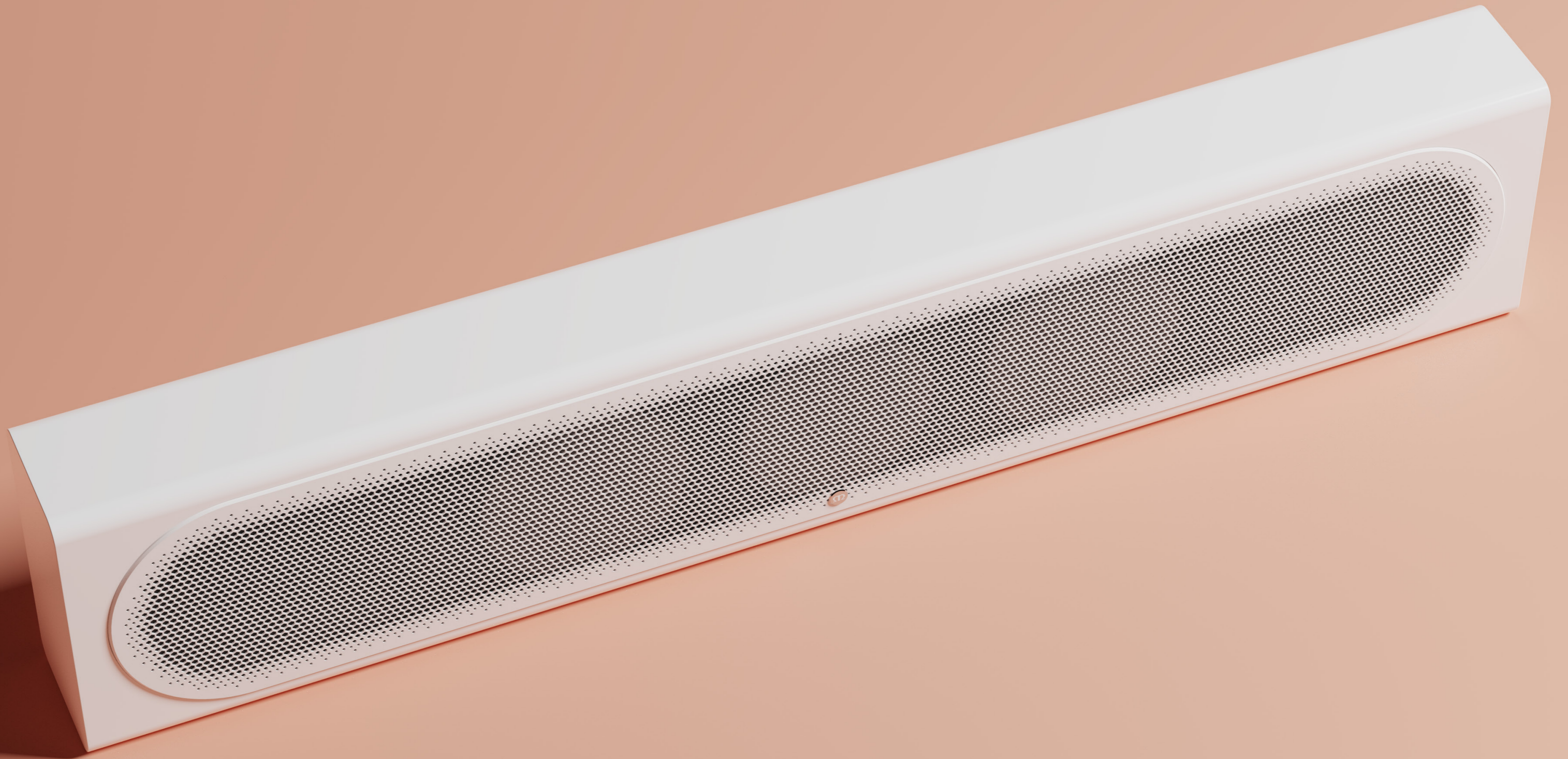
A compact system delivering hi-fi, cinematic AV performance, beautifully engineered for modern installation.





Tuned for True High-Fidelity.





Pictured: Radius 4G On-Wall in Satin White

Acoustic innovation

1 New C-CAM, RST III cone

Lightweight, strong and more rigid than conventional materials, C-CAM remains the staple driver cone choice for all Monitor Audio speakers and works pistonically to deliver impressive levels of fidelity, now with an evolved RST cone geometry that reduces breakup and resonances.

3 New RST III bass/mid driver

A powerful motor system sits behind the light-weight and rigid C-CAM cone. Coupled with optimised surround, new spider design, and increased voice coil diameter, it enables control over deep bass performance, reducing distortion, for punchier, precise bass.

5 Through-bolt Driver Bracing

Through-Bolt technology allows the drive units to be securely braced to the rear of the cabinet and tightened to a specific torque to ensure the drive unit and cabinet remain structurally strong, removing unwanted chassis resonances.

7 Cabinet Design

Monitor Audio is world renowned for the quality and craftsmanship of its cabinetry. Radius Series 4G continues its leadership in this area with beautifully engineered cabinets that present modern satin painted finishes for delect applications

2 New C-CAM Gold Dome Tweeter

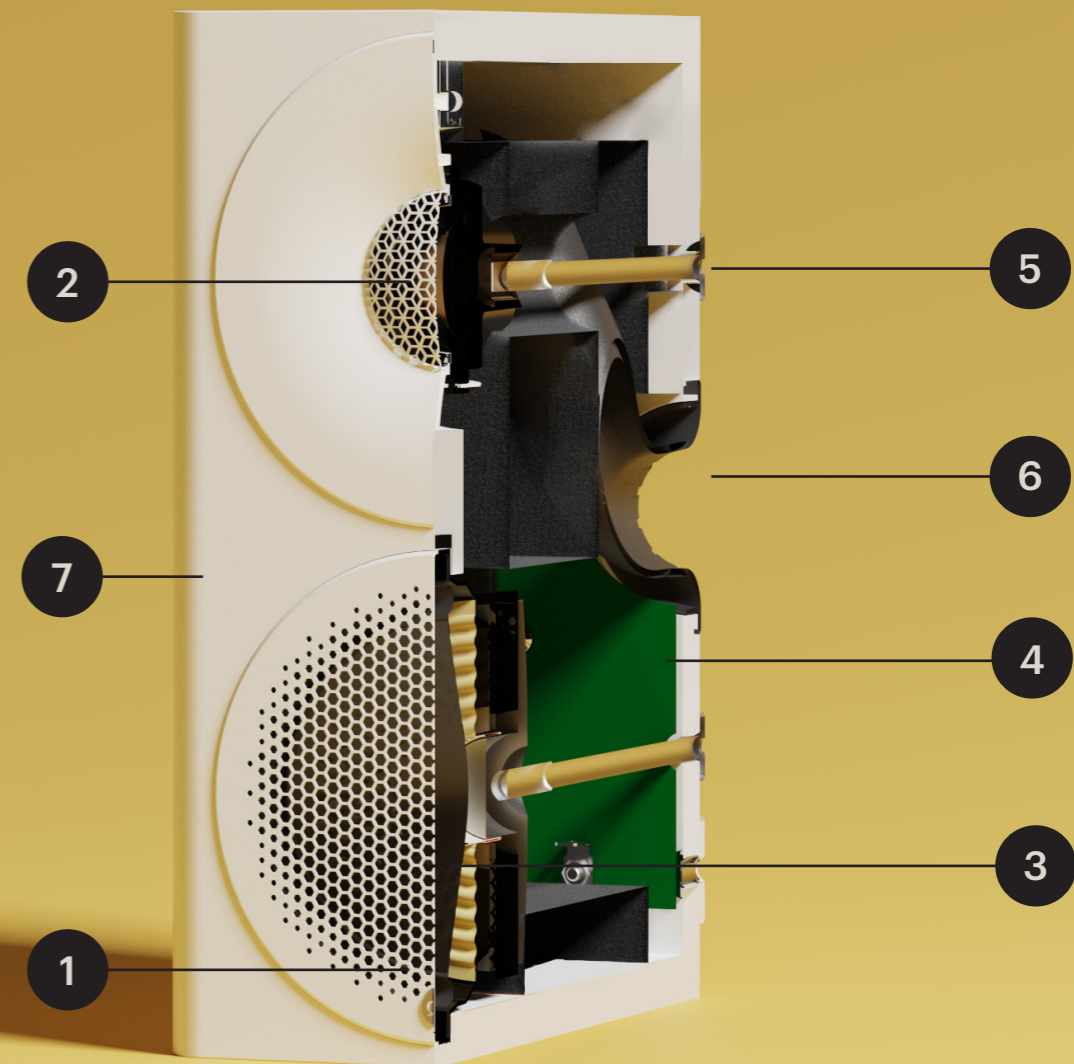
Since 1982, Monitor Audio's gold dome tweeter has continuously been refined. A precision instrument, the combination of incremental changes over four-decades have ensured it delivers crisp HF with ultra-realism, clarity and detail.

4 New Crossover design

Hours of listening, and carefully curated component selection, Bronze Series 7G crossovers have undergone extensive measurements to ensure the purest of signal transfer.

6 HiVe II Ports

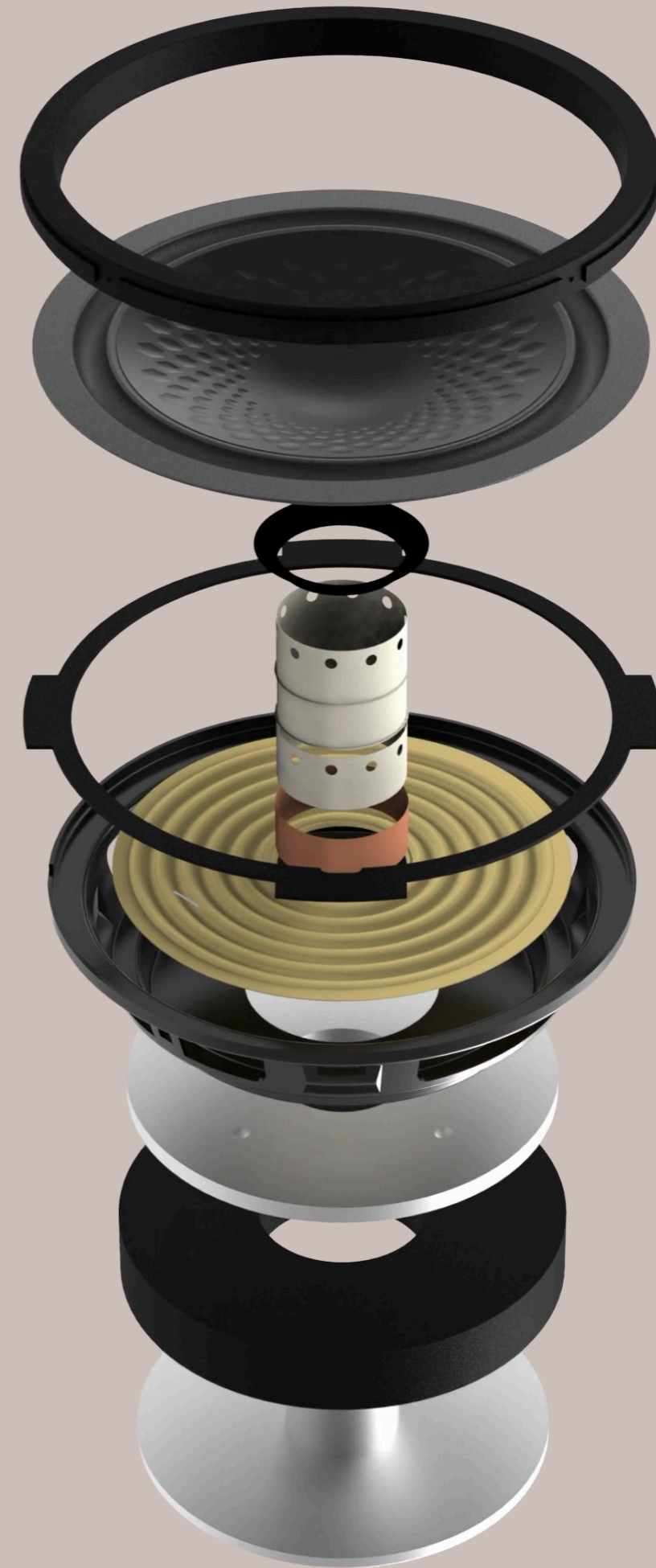
The high-velocity II port (HiVe II) design reduces turbulence and support air-flow acceleration within the port, allowing for fast powerful bass and greater transient response.



RST III driver & Motor System

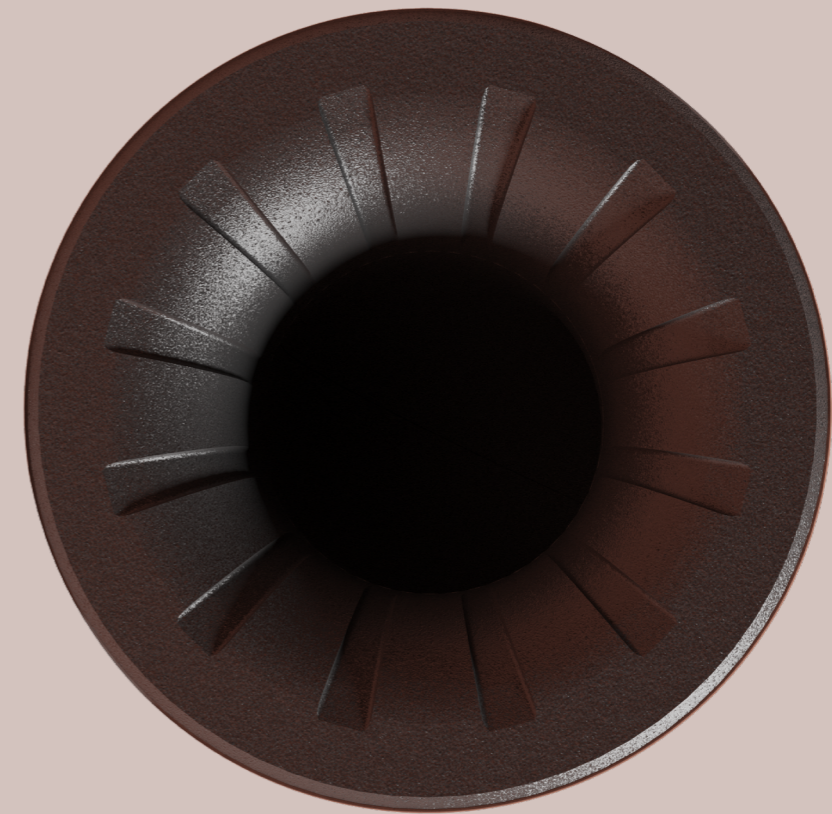
The all-new RST III C-CAM cone and motor system in the Radius 4G represents a significant evolution in Monitor Audio's metal cone and driver technology. The bass/mid drivers have undergone full FEA optimisation, improving driver surround, spider and chassis design to reduce breakup and reduce resonances.

Larger magnets, improved voice coil, and enhanced venting, it delivers greater control, reduced distortion and improved dynamic range. Complementing this is the new C-CAM Gold Dome Tweeter with an optimised UD Waveguide, ensuring smooth, extended high frequencies, precise dispersion, and seamless integration with the RST III driver. The result is a speaker that offers remarkable clarity, punch, and immersive high-fidelity performance in a compact, versatile form.



HiVe II Port Technology

The refined HiVe II ports on Radius 4G are engineered to deliver cleaner, faster airflow, reducing turbulence and minimising unwanted chuffing. On the all-new Radius 3 models, the ports have been enlarged by 50% compared to the previous generation, further enhancing smooth airflow and delivering tighter, more controlled bass performance.



C-CAM Gold Dome Tweeter

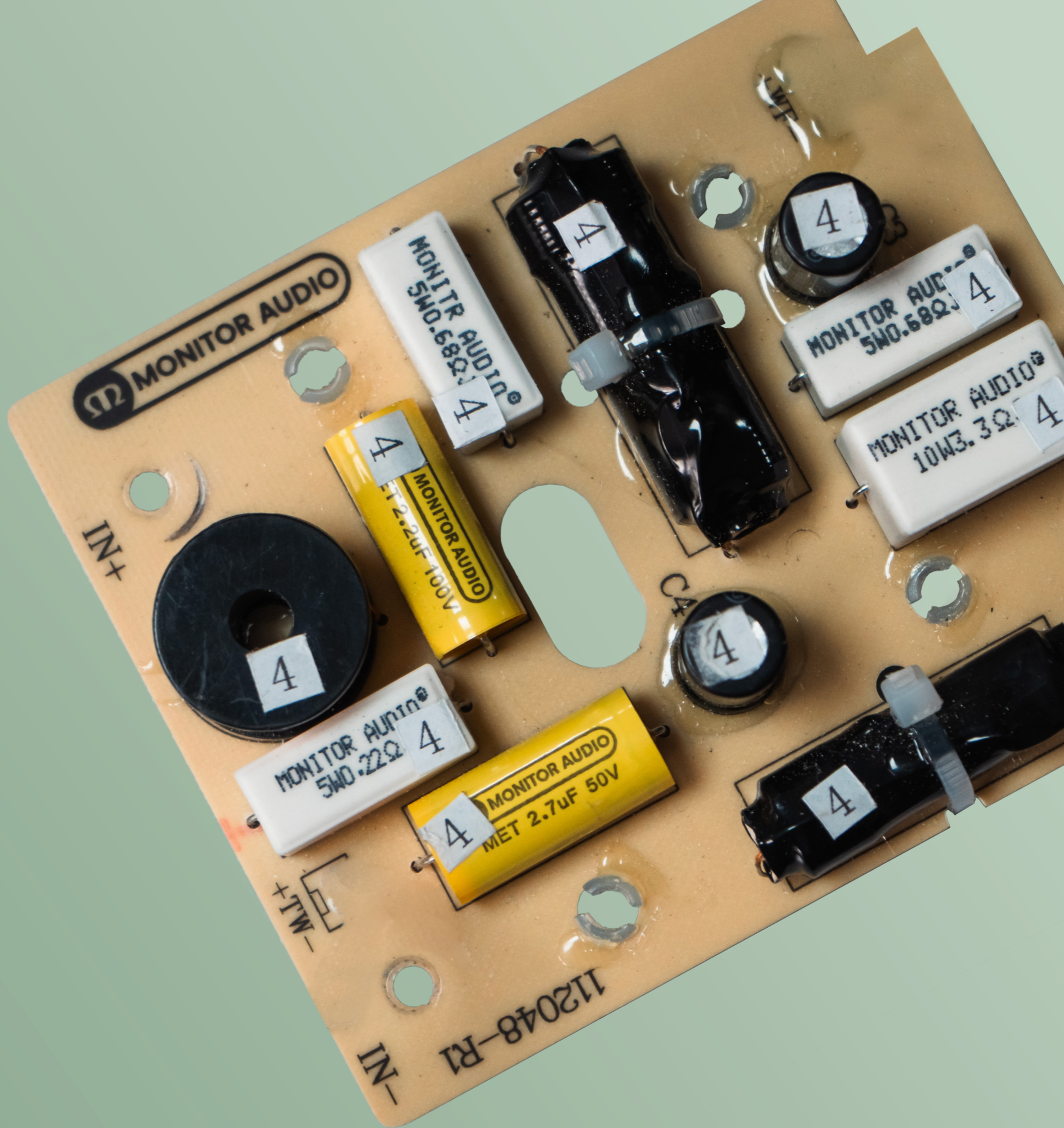
Complementing the all-new C-CAM RST III Bass/Mid driver, Radius 4G features Monitor Audio's refined, fully vented C-CAM Gold Dome Tweeter with an optimised UD Waveguide. Now engineered with an external magnet system and a vented former, the design achieves true full venting, eliminating resonance paths from both the dome and surround.

The Tweeter, formed from a single piece of Ceramic-Coated Aluminium/Magnesium, delivers exceptional rigidity, low distortion, and a fast, precise high-frequency response with outstanding clarity and openness. The UD Waveguide ensures smooth, extended highs, controlled dispersion, and seamless integration with the RST III driver, resulting in remarkable clarity, punch, and immersive high-fidelity performance in a compact form, while the gold dome remains a hallmark of Monitor Audio's metal-driver expertise.



Radius Series 4G cross over design

The Radius 4G features a carefully engineered crossover, optimised to deliver seamless integration between the C-CAM Gold Dome Tweeter and RST III driver. Precision components ensure smooth, balanced frequency response, tight imaging, and coherent sound, allowing the speaker to reproduce music and dialogue with clarity, impact, and true high-fidelity accuracy.



Radius Series 4G



Pictured: Radius 4G 3 in Satin White

Radius 1 4G

Compact yet capable, Radius 1 is ideal for discreet AV, surround or multi-room sound systems. With versatile mounting options; wall, desktop or floor stand and the option of adding a subwoofer, Radius 1 can deliver full-range, high-fidelity sound from an ultra-compact form. The newly designed 4-inch C-CAM driver with RST III geometry, partnered with a 19mm C-CAM Gold Dome tweeter, delivering precise, lifelike sound from this cleverly engineered micro-speaker – a perfect, discreet, style-conscious residential or commercial speaker.

- Compatible with MASM wall bracket
- Compatible with the Radius Desk Pad and Floor Stand
- Finishes available: Satin White, Gloss Black





Pictured: Radius 1 4G in Black

Radius 3 4G

Radius 3 is a high-performance mini-monitor delivering precise, high-fidelity sound for TV, film, music, gaming and multi-room applications, including discreet commercial installations. Featuring a 4.5-inch C-CAM driver with RST III geometry and a 25mm C-CAM Gold Dome tweeter, each powered by its own optimised motor system, it combines impressive sonic performance with exceptional versatility, supporting desktop, floor-stand or wall-mount installation.

- Compatible with FIX-M wall bracket
- Compatible with the Radius Desk Pad and Floor Stand
- Finishes available: Satin White, Gloss Black





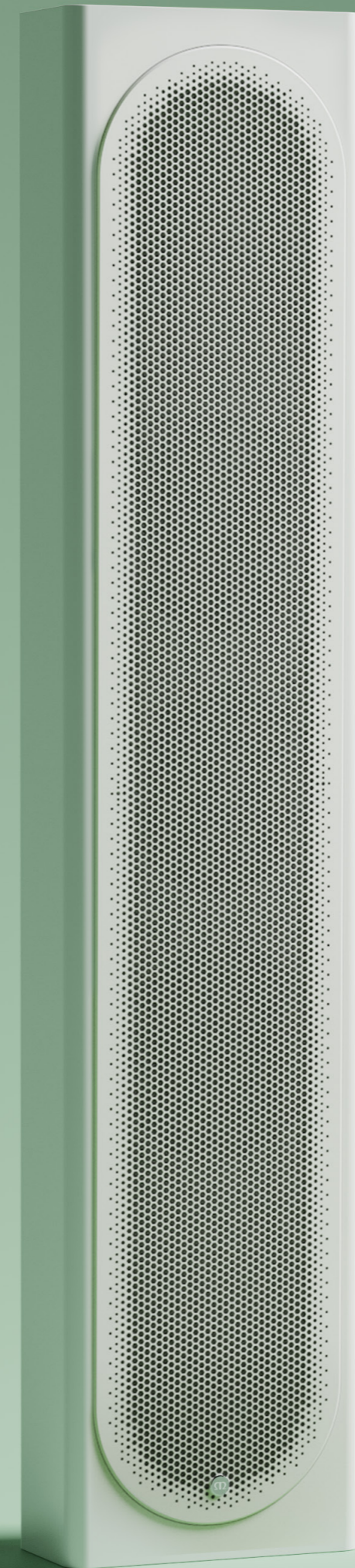
Pictured: Radius 3 4G in White

Pictured: Bronze 300 7G in Bath White

Radius On-Wall 4G

Transform TV and film sound with immersive, lifelike performance that brings every scene to life. With a slim, low-profile form and a clean, contemporary design, Radius On-Wall integrates seamlessly around a TV screen, delivering enhanced clarity, scale and impact without compromising on style. Simply add a matching subwoofer to unlock engaging, full-range impact that truly brings movies and entertainment to life.

- 'MA roundel logo' is removeable to support vertical or horizontal placement
- Wall bracket and fixing template supplied
- Finishes available: Satin White, Gloss Black





Pictured: Radius On Wall 4G in White

Accessories.

Radius has never been more adaptable.



FIX-M / MASM Bracket

The Radius 1 and Radius 3 can be mounted on walls using the MASM and FIX-M brackets, respectively. Both solutions provide straightforward installation while offering flexible orientation and adjustable angles, allowing the speaker to be positioned precisely for optimal performance in any space.





Pictured: Radius 3 4G in White with FIX-M Bracket

Radius Floor Stand

The custom-designed Radius Floor Stand combines style with stability. Its wooden tripod legs provide a modern, contemporary aesthetic while offering a secure and sturdy base. The Radius 1 or Radius 3 attaches easily with a single bolt, and speaker cables can be neatly routed from the terminals down through the stand, exiting at the base for a clean, uncluttered appearance.





Pictured: Radius 3 4G and Radius Floor Stand in Black

Desk Stand

Designed for the Radius 1 and Radius 3, the Desk Pad provides a stable, secure platform for desktop placement of either speaker. Crafted from precision-engineered rubber with specific hardness for effective vibration isolation, it minimises unwanted resonance while enhancing clarity. The Desk Pad also offers a subtle upward tilt, angling the speakers for optimal sonic performance in desktop environments.



Ultra-Compact Speaker concepts, refined for scalable solutions.

Radius Series 4G refines Monitor Audio's ultra-compact speaker concept, combining discreet, design-led aesthetics with genuine hi-fi performance, delivering a scalable solution for both stereo and immersive AV systems in modern, commercial or residential living spaces.



Design-led Compact Performance

A focussed three-product, compact, design-focused speaker range engineered to blend seamlessly into contemporary interiors while maintaining high-performance audio.

Big Sound, Minimal Footprint

Utilises advanced driver technology to deliver clear, detailed sound with surprising scale from ultra-small enclosures, building on the series' legacy of high-fidelity performance.

Scalable for Any Space

Highly versatile system architecture, enabling everything from discreet stereo setups to full multi-channel home cinema configurations with matching subwoofers.



Pictured: Radius 3 4G and Radius FloorStand in Black

Pictured: Bronze 300 7G in High Gloss Black

Technical specifications



Model	Radius 1 4G	Radius 3 4G	Radius On Wall 4G
System Format	2-Way	2-Way	2-Way
Frequency Response, In-Room (-6dB)	100 Hz - 35 kHz	44 Hz - 35 kHz	69 Hz - 35 kHz
Sensitivity (2.83 Vrms @ 1m, Free-Field)	82 dB	84 dB	N/A
Sensitivity (2.83 Vrms @ 1m, Installed)	N/A	N/A	90 dB
Nominal Impedance	8 Ohms	8 Ohms	8 Ohms
Minimum Impedance (20Hz to 20kHz)	3.8 Ohms @ 950 Hz	4.0 Ohms @ 250 Hz	4.4 Ohms @ 700 Hz
Maximum Peak SPL (AES75, Z-weighted)	104 dB	107 dB	114 dB
Continuous Power Handling (CTA 426-B)	50 W	75 W	100 W
Recommended Amplifier Power (RMS, Music Signal)	50 - 100 W into 4 Ohms 25 - 50 W into 8 Ohms	75 - 150 W into 4 Ohms 40 - 75 W into 8 Ohms	100 - 200 W into 4 Ohms 50 - 100 W into 8 Ohms
Bass Alignment	Sealed	Ported	Ported
Port Tuning Frequency	N/A	53 Hz	62 Hz
Crossover Frequency	LF/HF: 3.2 kHz	LF/HF: 2.7 kHz	LF/HF: 2.3 kHz
Drive Unit Complement	1x 4" RST III bass-mid driver 1x 19mm C-CAM Gold Dome tweeter	1x 4 ^{1/2} " RST III bass-mid driver 1x 25mm C-CAM Gold Dome tweeter	2x 4 ^{1/2} " RST III bass-mid driver 1x 25mm C-CAM Gold Dome tweeter
External Dimensions with all accessories fitted (H x W x D)	135 x 135 x 156 mm (5 ^{3/16} x 5 ^{3/16} x 6 ^{1/8} ")	255 x 150 x 201 mm (10 ^{1/16} x 5 ^{7/8} x 7 ^{5/8} ")	750 x 154 x 78 mm (29 ^{1/2} x 6 ^{1/8} x 3 ^{1/8} ")
Weight (Product, Each)	1.8 kg (3 lb 15 oz)	3.7 kg (8 lb 3 oz)	6.4kg (14 lb 2 oz)



Model	Radius Floor Stand	Radius Desk Pad
System Format	N/A	N/A
Frequency Response, In-Room (-6dB)	N/A	N/A
Sensitivity (2.83 Vrms @ 1m, Free-Field)	N/A	N/A
Sensitivity (2.83 Vrms @ 1m, Installed)	N/A	N/A
Nominal Impedance	N/A	N/A
Minimum Impedance (20Hz to 20kHz)	N/A	N/A
Maximum Peak SPL (AES75, Z-weighted)	N/A	N/A
Continuous Power Handling (CTA 426-B)	N/A	N/A
Recommended Amplifier Power (RMS, Music Signal)	N/A	N/A
Bass Alignment	N/A	N/A
Port Tuning Frequency	N/A	N/A
Crossover Frequency	N/A	N/A
Drive Unit Complement	N/A	N/A
External Dimensions with all accessories fitted (H x W x D)	780 x 510 x 444 mm (30 ^{11/16} x 20 ^{1/16} x 17 ^{9/16} ")	24 x 114 x 138 mm (1 ^{5/8} x 4 ^{1/2} x 5 ^{13/16} ")
Weight (Product, Each)	1.5 kg (3 lb 5 oz)	0.4 kg (0 lb 14 oz)

Available Finishes



White



Black

Learn more about Radius Series 4G at monitoraudio.com/radius



